

D **Fahmentuch CS**
Art. 1441-

F **Toile à drapeau CS**
Réf. 1441-

E **Banner Material CS**
Art. 1441-

Bitte beachten:
In der Darstellung der Muster als PDF-Datei kann es technisch bedingt zu Farbabweichungen kommen.

Attention!
Photos non contractuelles.

Please note:
Photos of samples shown in pdf-file may vary slightly in colour due to technical reasons.



Fahmentuch CS

100 % Trevira CS.
 Permanent schwer entflammbar.
 Stücklängen ca. 30 und 60 lfm.
 Akustisches Gutachten verfügbar.

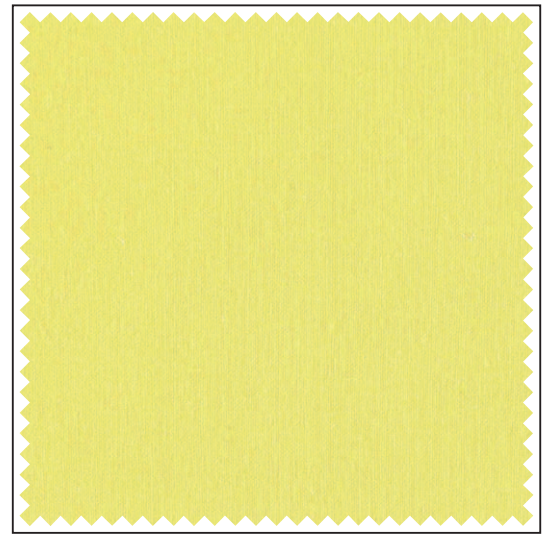
Toile à drapeau CS

100 % trévira CS.
 Longueur des pièces env. 30 et
 60 ml.
 Certificat acoustique disponible.

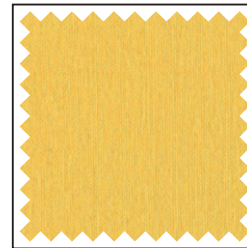
Banner Material CS

100 % Trevira CS.
 Inherently flame retardant.
 Piece lengths ~32.8 and 65.6 yds.
 Acoustic certificate available.

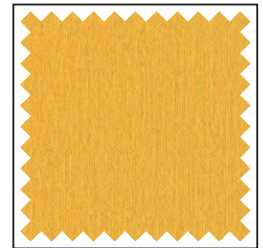
Art. / Réf.	Farben	Coloris	Colours	B1	M1	EN	EN* NFPA	↔	cm	ft/in	g/m²	oz/yd²
1441 0719	maisgelb	jaune mais	maize yellow	•	•	•	•		160	63"	150	4.42
1441 0733	zinkgelb	jaune zinc	zinc yellow	•	•	•	•		160	63"	150	4.42
1441 0731	sonnengelb	jaune soleil	sun yellow	•	•	•	•		160	63"	150	4.42
1441 0753	orange	orange	orange	•	•	•	•		160	63"	150	4.42
1441 0464	signalrot	rouge sécurité	signal red	•	•	•	•		160	63"	150	4.42
1441 0460	feuerrot	rouge feu	flame red	•	•	•	•		160	63"	150	4.42
1441 0478	weinrot	bordeaux	wine red	•	•	•	•		160	63"	150	4.42
1441 0402	marzipan	massepain	marzipan	•	•	•	•		160	63"	150	4.42
1441 0207	amethyst-violett	améthyste	amethyst purple	•	•	•	•		160	63"	150	4.42
1441 0211	lila	lilas	lilac	•	•	•	•		160	63"	150	4.42
1441 0223	flieder	mauve	light lilac	•	•	•	•		160	63"	150	4.42
1441 0102	himalayablau	bleu himalaya	himalaya blue	•	•	•	•		160	63"	150	4.42
1441 0106	eisblau	bleu glacier	ice blue	•	•	•	•		160	63"	150	4.42
1441 0142	himmelblau	bleu ciel	sky blue	•	•	•	•		160	63"	150	4.42
1441 0156	saphirblau	saphir	sapphire	•	•	•	•		160	63"	150	4.42
1441 0184	marineblau	bleu marine	navy blue	•	•	•	•		160	63"	150	4.42
1441 0186	kobaltblau	bleu cobalt	cobalt blue	•	•	•	•		160	63"	150	4.42
1441 0604	lindgrün	vert d'eau	pastel green	•	•	•	•		160	63"	150	4.42
1441 0610	pistaziengrün	vert pistache	pistachio green	•	•	•	•		160	63"	150	4.42
1441 0636	petrol	pétrole	petrol	•	•	•	•		160	63"	150	4.42
1441 0666	minzgrün	vert menthe	mint green	•	•	•	•		160	63"	150	4.42
1441 0682	opalgrün	vert opale	opal green	•	•	•	•		160	63"	150	4.42
1441 0707	champagner-gelb	jaune champagne	champagne	•	•	•	•		160	63"	150	4.42
1441 0305	naturbeige	beige naturel	nature beige	•	•	•	•		160	63"	150	4.42
1441 0509	beige	beige	beige	•	•	•	•		160	63"	150	4.42
1441 0517	sandbraun	sable	sand	•	•	•	•		160	63"	150	4.42
1441 0569	nussbraun	brun noisette	nut brown	•	•	•	•		160	63"	150	4.42
1441 0303	signalweiß	blanc sécurité	signal white	•	•	•	•		160	63"	150	4.42
1441 0602	achatgrau	gris agate	agate grey	•	•	•	•		160	63"	150	4.42
1441 0321	platingrau	gris platine	platinum grey	•	•	•	•		160	63"	150	4.42
1441 0313	fenstergrau	gris fenêtre	window grey	•	•	•	•		160	63"	150	4.42
1441 0329	mausgrau	gris souris	mouse grey	•	•	•	•		160	63"	150	4.42
1441 0319	steingrau	gris pierre	stone grey	•	•	•	•		160	63"	150	4.42
1441 0229	basaltgrau	gris basalte	basalt grey	•	•	•	•		160	63"	150	4.42
1441 0347	tiefschwarz	noir foncé	jet black	•	•	•	•		160	63"	150	4.42



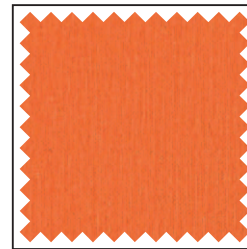
-0719 Griffmuster / Echantillon / Sample



-0733



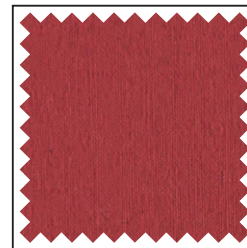
-0731



-0753



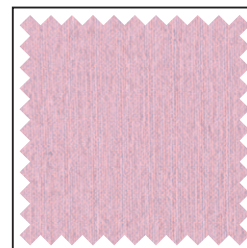
-0464



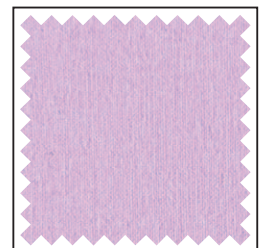
-0460



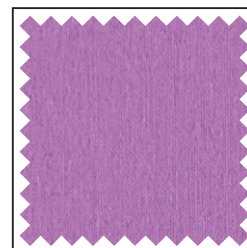
-0478



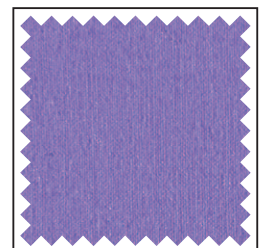
-0402



-0207



-0211

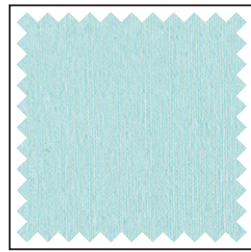


-0223

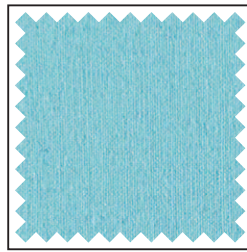
Der Inhalt dieser Farbkarte entspricht dem Stand zum Zeitpunkt des Drucks.
 Aktuellste Angaben entnehmen Sie bitte den entsprechenden Datenblättern auf unserer Internetseite.

Les informations contenues dans ce nuancier sont valables à la date de l'impression.
 Pour les mises à jour, consulter notre site internet.

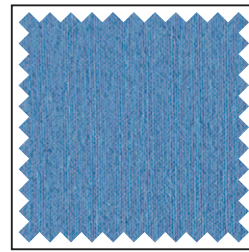
All information and colour specifications are valid at the time of printing.
 For latest product details please see the respective online data sheet.



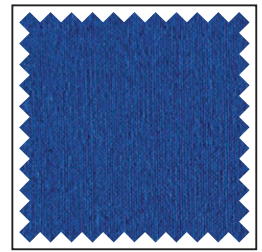
-0102



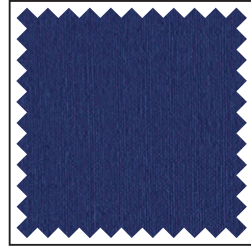
-0106



-0142



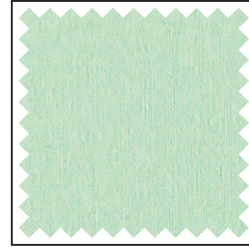
-0156



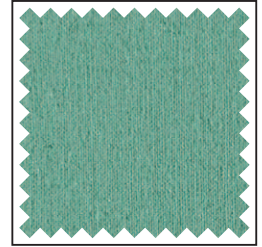
-0184



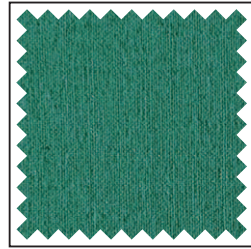
-0186



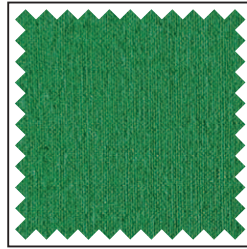
-0604



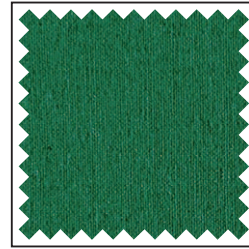
-0610



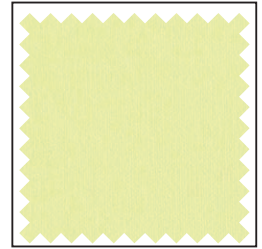
-0636



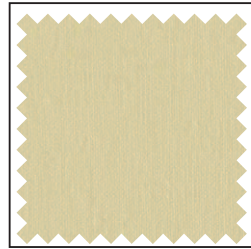
-0666



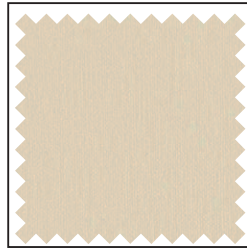
-0682



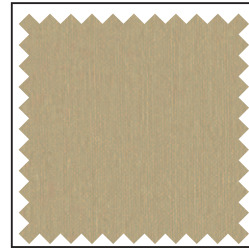
-0707



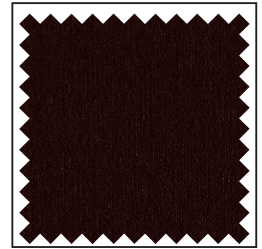
-0305



-0509



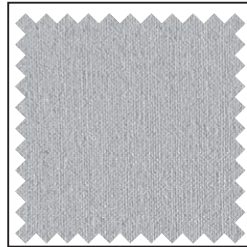
-0517



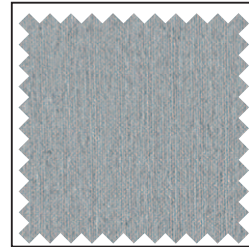
-0569



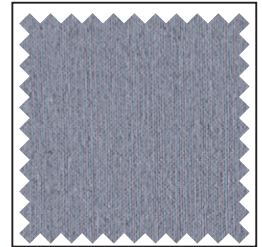
-0303



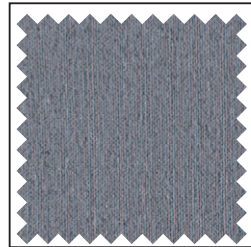
-0602



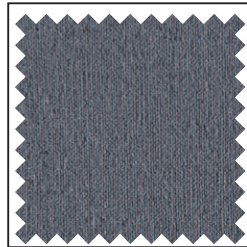
-0321



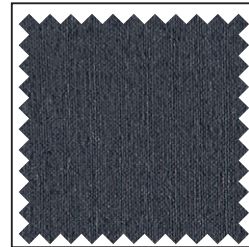
-0313



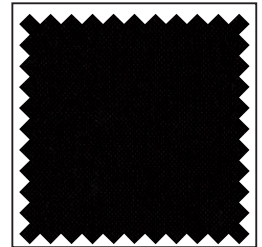
-0329



-0319



-0229



-0347

Erläuterungen der Brandschutznormen B1, M1, BS, EN, EN* und NFPA unter www.gerriets.com.

Auf Wunsch:
Professionell konfektionierte
Vorhänge aus unseren Ateliers.

Informations concernant les normes de feu B1, M1, BS, EN, EN* et NFPA, consulter notre site www.gerriets.com.

Sur demande :
Confection sur mesure dans nos
ateliers de couture.

For explanation of flame retardant standards B1, M1, BS, EN, EN* and NFPA, please go to www.gerriets.com.

On request:
Professional quality curtains
manufactured in our workshops.

B1 = DIN 4102 B1
M1 = M1
BS = BS 5867
EN = DIN EN 13501-1
EN* = DIN EN 13773
NFPA = NFPA 701

Gerriets GmbH
Im Kirchenhürstle 5-7
DE-79224 Umkirch
☎ +49 7665 960 0
☎ +49 7665 960 125
info@gerriets.com
www.gerriets.com

Gerriets S. A. R. L.
Rue du Pourquoi Pas
FR-68600 Volgelsheim
☎ +33 3 89 22 70 22
☎ +33 3 89 22 70 50
info@gerriets.fr
www.gerriets.fr

Gerriets International Inc.
130 Winterwood Avenue
US-Ewing NJ 08638
☎ +1 609 771 8111
☎ +1 609 771 8118
info@gerriets.us
www.gerriets.us

Gerriets Great Britain Ltd.
18 Verney Road
GB-London SE16 3DH
☎ +44 20 7639 7704
☎ +44 20 7732 5760
info@gerriets.co.uk
www.gerriets.co.uk

Gerriets Austria CEE GmbH
Gorskistraße 8
AT-1230 Wien
☎ +43 1 6000 600 0
☎ +43 1 6032 585
info@gerriets.at
www.gerriets.at

Gerriets España S. L.
Pol. Ind. Camporosso Sur
Avda. de Las Moreras
Sector 1, Naves 1-2-3
ES-28350 Ciempozuelos, Madrid
☎ +34 91 134 5022
☎ +34 91 134 5084
info@gerriets.es
www.gerriets.es

Gerriets Belgique
Distribué par :
Gerriets S. A. R. L.
Rue du Pourquoi Pas
FR-68600 Volgelsheim
☎ +33 3 89 22 70 22
☎ +33 3 89 22 70 50
info@gerriets.fr
www.gerriets.fr

Gerriets Nederland
LevTec BV
Pieter Braaijweg 51
NL-1114 AJ Amsterdam-Duivendrecht
☎ +31 20 40 82 553
☎ +31 20 40 82 662
info@gerriets.nl
www.gerriets.nl

Gerriets Italia
Risam for show
Viale Spagna 150 / B
IT-20093 Cologno Monzese (MI)
☎ +39 02 2532 113
☎ +39 02 2532 130
info@gerriets.it
www.gerriets.it

Gerriets Hellas
Stage Art EPE
Stournari 27B
GR-10682 Athens
☎ +30 210 3836 715
☎ +30 210 3811 929
info@gerriets.gr
www.gerriets.gr

Gerriets Turkey
Benart Sound-Light-Vision-Stage System
Ibrahim Karaoglanoglu Cad.
Altinok Plaza No:37 K:3
Seyrantepe – Kağıthane
TR-34418 Istanbul
☎ +90 212 254 33 43
☎ +90 212 254 33 53
benart@benart.net
www.benart.net

Gerriets Slovenija
(Croatia, Bosnia and Herzegovina,
Serbia, Montenegro, Macedonia,
Kosovo)
MAORI, d.o.o.
Špruha 14
SI-1236 loc Trzin
☎ +386 143 052 79
☎ +386 590 27 508
info@gerriets.si
www.gerriets.si

Gerriets Hungária
Gépbér Hungária Ltd
Mester u. 87
HU-1095 Budapest
☎ +36 147 665 21
☎ +36 147 665 20
info@gerriets.hu
www.gerriets.hu

Gerriets Romania
Distributed by:
Gerriets Austria CEE GmbH
Gorskistraße 8
AT-1230 Wien
☎ +43 1 6000 600 0
☎ +43 1 6032 585
info@gerriets.at
www.gerriets.at

Gerriets Bulgaria
Landau Impex GmbH
Shavarski pat Str. No. 3
BG-1000 Sofia, Losenetz
☎ +35 92 862 92 44
☎ +35 92 868 71 16
info@gerriets.bg
www.gerriets.bg

Gerriets Korea Co., Ltd.
22-12, Ogab-gil 192beon-gil,
Gamgok-myeon, Eumseong-gun,
Chungcheongbuk-do
Korea 369-852
☎ +82 2 477 7713
☎ +82 2 477 1490
info@gerriets.co.kr
www.gerriets.co.kr

Gerriets South Africa
AVL Distribution
P.O.Box 70740
4, Ealing Crescent
ZA-2021 Bryanston
☎ +27 11 463 5804
☎ +27 11 463 5809
info@gerriets.co.za
www.gerriets.co.za

Gerriets Brasil
Av. do Contorno, 6.413, 2º andar
Savassi
cep 30110-017 Belo Horizonte MG
Brasil
☎ +55 31 9201 4700
info@gerriets.com.br
www.gerriets.com.br

Gerriets Czech Republic / Slovakia
firmy GERRIETS pro CR a SR
Boretická 4
CZ-62800 BRNO
☎ +420 731 064 022
info@gerriets.cz
www.gerriets.cz

