

**D** **Eventtextilien**

**HABUTAI**  
Art. 1611-  
**Lasergewebe**  
Art. 1613-  
**Trevira CS VOILE**  
Art. 1612-  
**CS Taft**  
Art. 1614-  
**Ripstop**  
Art. 1615-

**F** **Toiles déco**

**HABUTAI**  
Réf. 1611-  
**Toile laser**  
Réf. 1613-  
**VOILE CS**  
Réf. 1612-  
**Taffetas CS**  
Réf. 1614-  
**Toile Spie**  
Réf. 1615-

**E** **Event Textiles**

**HABUTAI**  
Art. 1611-  
**Laser Scrim**  
Art. 1613-  
**Trevira CS VOILE**  
Art. 1612-  
**Taffeta CS**  
Art. 1614-  
**Ripstop**  
Art. 1615-

Bitte beachten:  
In der Darstellung der Muster als PDF-Datei kann es technisch bedingt zu Farbabweichungen kommen.

Attention!  
Photos non contractuelles.

Please note:  
Photos of samples shown in pdf-file may vary slightly in colour due to technical reasons.



**Chinaseide HABUTAI**

100 % Seide.  
 Stücklängen ca. 45 - 50 lfm.  
 Sonderfarben auf Anfrage  
 und ab 90 lfm lieferbar.

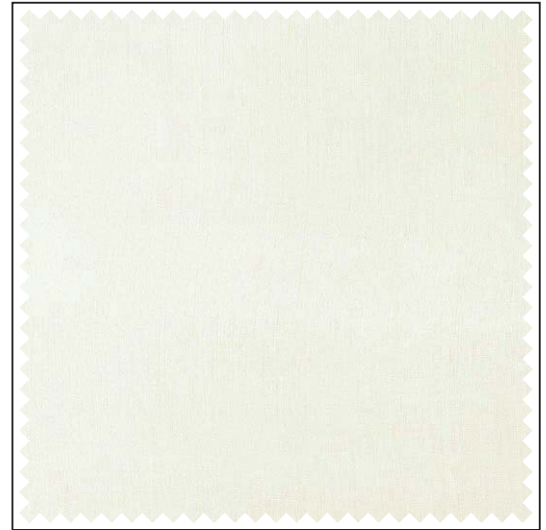
**Soie de Chine HABUTAI**

100 % soie.  
 Longueur des pièces env.  
 45 - 50 ml.  
 Coloris spéciaux :  
 à partir de 90 ml, sur demande.

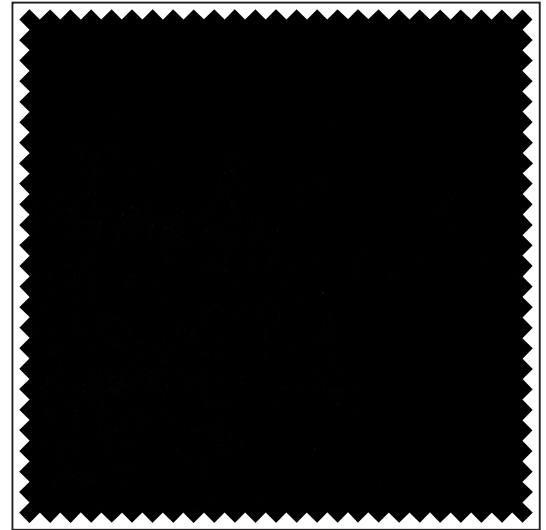
**China Silk HABUTAI**

100 % Silk.  
 Piece lengths approx.  
 49.2 - 54.6 yds.  
 Custom dyed colours on request,  
 minimum quantity 98.4 yds.

Art. / Réf.	Farben	Coloris	Colours	B1	M1	EN	EN* NFPA	↔ cm	ft/in	g/m <sup>2</sup> oz/yd <sup>2</sup>
1611 2000	rohweiß	écru	ecru					140	55"	22 0.65
1611 2020	schwarz	noir	black					140	55"	22 0.65
1611 2001	rohweiß	écru	ecru	•			•	140	55"	22 0.65
1611 2021	schwarz	noir	black	•			•	140	55"	22 0.65
1611 4000	rohweiß	écru	ecru					140	55"	45 1.33
1611 4020	schwarz	noir	black					140	55"	45 1.33
1611 4001	rohweiß	écru	ecru	•			•	140	55"	45 1.33
1611 4021	schwarz	noir	black	•			•	140	55"	45 1.33



rohweiß / écru / ecru



schwarz / noir / black

**Lasergewebe**

50 % Polyamid, 50 % Polyester  
 Trevira CS.  
 Stücklängen ca. 100 lfm.

**Toile laser**

50 % polyamide, 50 % polyester  
 trévira CS.  
 Longueur des pièces env. 100 ml.

**Laser Scrim**

50 % Polyamide, 50 % Polyester  
 Trevira CS.  
 Piece lengths approx. 109.3 yds.

Art. / Réf.	Farben	Coloris	Colours	B1	M1	EN	EN* NFPA	↔ cm	ft/in	g/m <sup>2</sup> oz/yd <sup>2</sup>
1613 3011	grau-silber	gris-argent	grey-silver	•			•	300	118"	21 0.62



grau-silber / gris-argent / grey-silver

Erläuterungen der Brandschutz-  
 normen B1, M1, BS, EN, EN\* und  
 NFPA unter [www.gerriets.com](http://www.gerriets.com).

Informations concernant les normes  
 de feu B1, M1, BS, EN, EN\* et NFPA,  
 consulter notre site [www.gerriets.com](http://www.gerriets.com).

For explanation of flame retardant  
 standards B1, M1, BS, EN, EN\* and  
 NFPA, please go to [www.gerriets.com](http://www.gerriets.com).

B1 = DIN 4102 B1  
 M1 = M1  
 BS = BS 5867

EN = DIN EN 13501-1  
 EN\* = DIN EN 13773  
 NFPA = NFPA 701

**Trevira CS VOILE**

100 % Trevira CS.  
Permanent schwer entflammbar.  
Stüchlängen ca. 60 lfm.

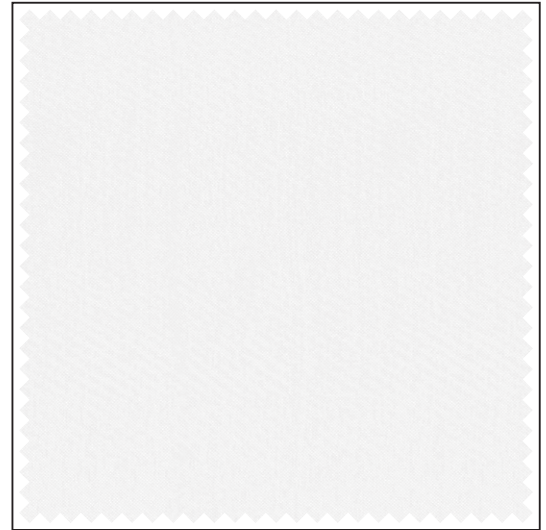
**VOILE CS**

100 % trévíra CS.  
Longueur des pièces env. 60 ml.

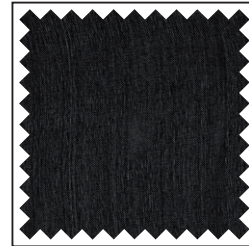
**Trevira CS VOILE**

100 % Trevira CS.  
Inherently flame retardant.  
Piece lengths approx. 65.6 yds.

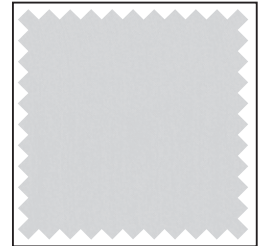
Art. / Réf.	Farben	Coloris	Colours	B1	M1	EN	EN* NFPA	↔	cm	ft/in	g/m <sup>2</sup>	oz/yd <sup>2</sup>
1612 3303	weiß	blanc	white	•	•	•	•		300	118"	50	1.47
1612 3347	schwarz	noir	black	•	•	•	•		300	118"	50	1.47
1612 3317	hellgrau	gris clair	light grey	•	•	•	•		310	122"	45	1.33
1612 3900	rohweiß	écru	ecru	•	•	•	•		310	122"	45	1.33
1612 3733	zinkgelb	jaune zinc	zinc yellow	•	•	•	•		310	122"	45	1.33
1612 3731	sonnengelb	jaune soleil	sun yellow	•	•	•	•		310	122"	45	1.33
1612 3739	orange	orange	orange	•	•	•	•		310	122"	45	1.33
1612 3462	rot	rouge	red	•	•	•	•		310	122"	45	1.33
1612 3184	marineblau	bleu marine	navy blue	•	•	•	•		310	122"	45	1.33
1612 3652	grün	vert	green	•	•	•	•		310	122"	45	1.33
1612 4110	weiß	blanc	white	•	•	•	•		420	13'9"	50	1.47
1612 4210	schwarz	noir	black	•	•	•	•		420	13'9"	50	1.47
1612 5030	weiß	blanc	white	•	•	•	•		520	17'0"	45	1.33
1612 5900	rohweiß	écru	ecru	•	•	•	•		520	17'0"	45	1.33



-3303 / -4110 / -5030



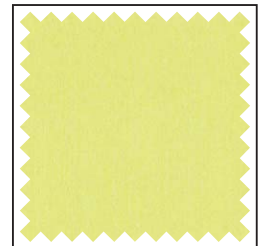
-3347 / -4210



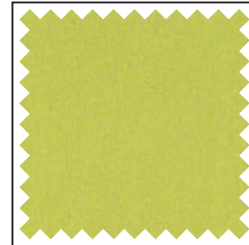
-3317



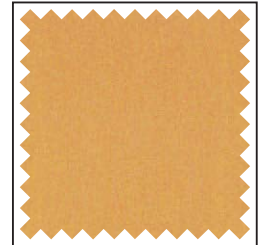
-3900 / -5900



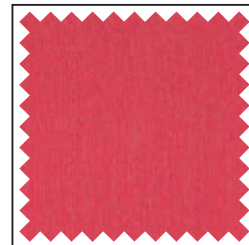
-3733



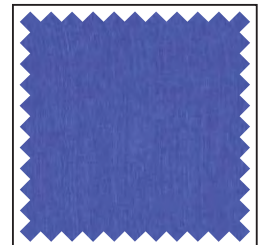
-3731



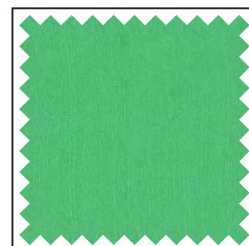
-3739



-3462



-3184



-3652

Auf Wunsch:  
Professionell konfektionierte  
Vorhänge aus unseren Ateliers.

Der Inhalt dieser Farbkarte ent-  
spricht dem Stand zum Zeitpunkt  
des Drucks.

Aktuellste Angaben entnehmen Sie  
bitte den entsprechenden Daten-  
blättern auf unserer Internetseite.

Sur demande :  
Confection sur mesure dans nos  
ateliers de couture.

Les informations contenues dans ce  
nuancier sont valables à la date de  
l'impression.

Pour les mises à jour, consulter  
notre site internet.

On request:  
Professional quality curtains  
manufactured in our workshops.

All information and colour  
specifications are valid at the time  
of printing.

For latest product details please see  
the respective online data sheet.

**CS Taft**

100 % Trevira CS.  
 Permanent schwer entflammbar.  
 Stücklängen ca. 30 und 60 lfm.

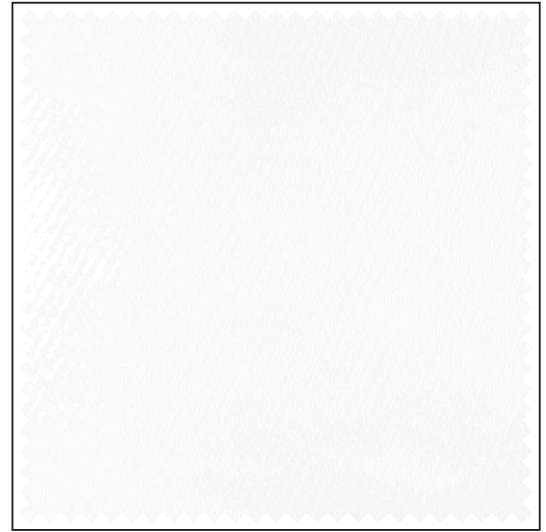
**Taffetas CS**

100 % trévira CS.  
 Longueur des pièces env. 30 et 60 ml.

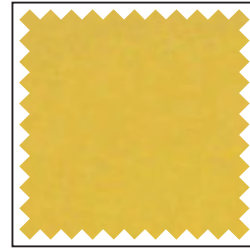
**Taffeta CS**

100 % Trevira CS.  
 Inherently flame retardant.  
 Piece lengths ~32.8 and 65.6 yds.

Art. / Réf.	Farben	Coloris	Colours	B1	M1	EN	EN* NFPA	↔	cm	ft/in	g/m <sup>2</sup>	oz/yd <sup>2</sup>
1614 3731	sonnengelb	jaune soleil	sun yellow	•	•	•	•		310	122"	80	2.36
1614 3545	orange	orange	orange	•	•	•	•		310	122"	80	2.36
1614 3444	pink	fuchsia	magenta	•	•	•	•		310	122"	80	2.36
1614 3464	rot	rouge	red	•	•	•	•		310	122"	80	2.36
1614 3156	blau	bleu	blue	•	•	•	•		310	122"	80	2.36
1614 3184	marineblau	bleu marine	navy blue	•	•	•	•		310	122"	80	2.36
1614 3678	moosgrün	vert mousse	moss	•	•	•	•		310	122"	80	2.36
1614 3555	braun	brun	brown	•	•	•	•		310	122"	80	2.36
1614 3313	hellgrau	gris clair	light grey	•	•	•	•		310	122"	80	2.36
1614 3303	weiß	blanc	white	•	•	•	•		310	122"	80	2.36
1614 3347	schwarz	noir	black	•	•	•	•		310	122"	80	2.36
1614 5303	weiß	blanc	white	•	•	•	•		520	17'0"	80	2.36



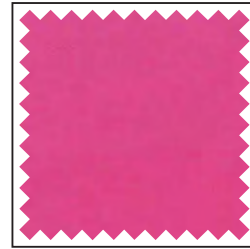
-3303 / -5303



-3731



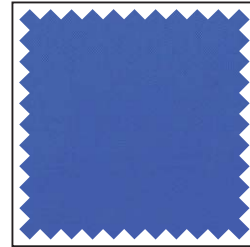
-3545



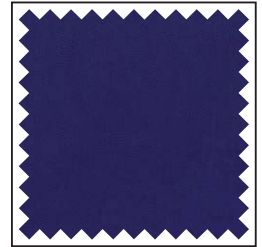
-3444



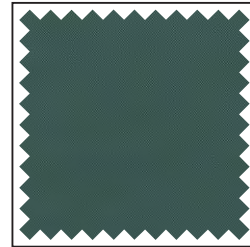
-3464



-3156



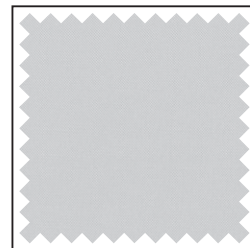
-3184



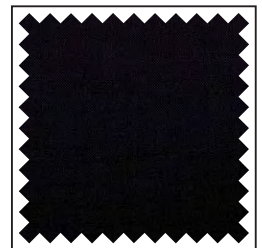
-3678



-3555



-3313



-3347

**Ripstop**

100 % Polyester.

160 cm:

Stücklängen ca. 100 lfm.

Nur in ganzen Stücken lieferbar.

285 cm:

Stücklängen ca. 50 / 100 lfm.

**Toile Spie**

100 % polyester.

160 cm :

Longueur des pièces env. 100 ml.

Pièces entières seulement.

285 cm :

Longueur des pièces env. 50 / 100 ml.

**Ripstop**

100 % Polyester.

160 cm:

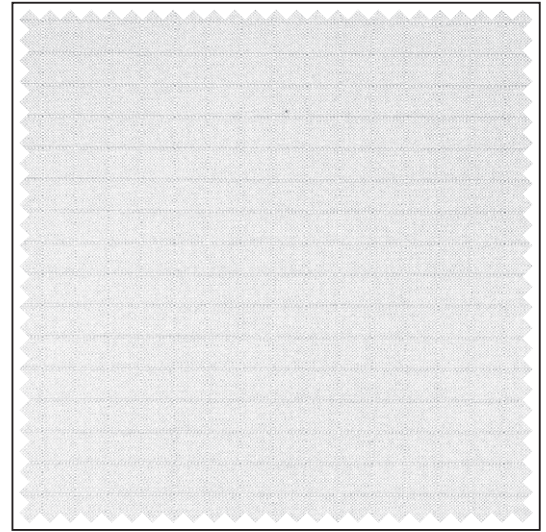
Piece lengths approx. 109.3 yds.

Available in full pieces only.

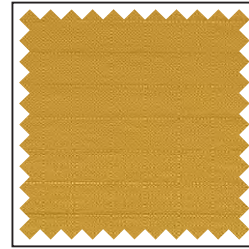
285 cm:

Piece lengths approx. 54.6 / 109.3 yds.

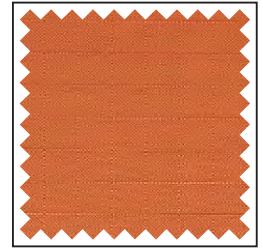
Art. / Réf.	Farben	Coloris	Colours	B1	M1	EN	EN* NFPA	↔ cm	ft/in	g/m <sup>2</sup>	oz/yd <sup>2</sup>
1615 1710	gelb	jaune	yellow	•	•	•		160	63"	100	2.95
1615 1720	orange	orange	orange	•	•	•		160	63"	100	2.95
1615 1400	rot	rouge	red	•	•	•		160	63"	100	2.95
1615 1510	blau	bleu	blue	•	•	•		160	63"	100	2.95
1615 1520	marineblau	bleu marine	navy blue	•	•	•		160	63"	100	2.95
1615 1600	grün	vert	green	•	•	•		160	63"	100	2.95
1615 1100	weiß	blanc	white	•	•	•		160	63"	100	2.95
1615 1300	grau	gris	grey	•	•	•		160	63"	100	2.95
1615 1200	schwarz	noir	black	•	•	•		160	63"	100	2.95
1615 2100	weiß	blanc	white	•	•	•		285	112"	100	2.95



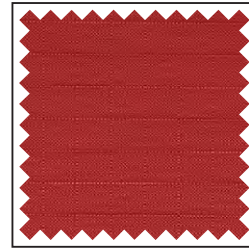
-1100 / -2100



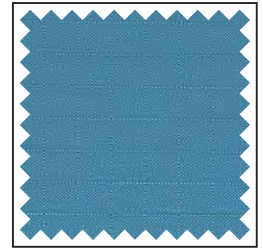
-1710



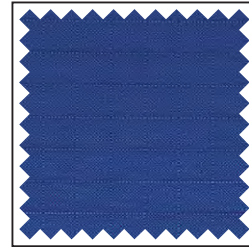
-1720



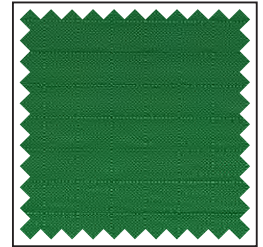
-1400



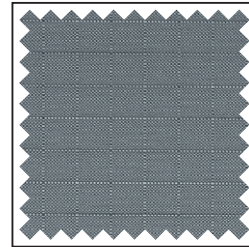
-1510



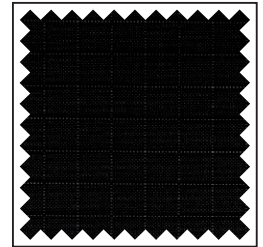
-1520



-1600



-1300



-1200

Gerriets GmbH  
Im Kirchenhürstle 5-7  
DE-79224 Umkirch  
☎ +49 7665 960 0  
☎ +49 7665 960 125  
info@gerriets.com  
www.gerriets.com

Gerriets S. A. R. L.  
Rue du Pourquoi Pas  
FR-68600 Volgelsheim  
☎ +33 3 89 22 70 22  
☎ +33 3 89 22 70 50  
info@gerriets.fr  
www.gerriets.fr

Gerriets International Inc.  
130 Winterwood Avenue  
US-Ewing NJ 08638  
☎ +1 609 771 8111  
☎ +1 609 771 8118  
info@gerriets.us  
www.gerriets.us

Gerriets Great Britain Ltd.  
18 Verney Road  
GB-London SE16 3DH  
☎ +44 20 7639 7704  
☎ +44 20 7732 5760  
info@gerriets.co.uk  
www.gerriets.co.uk

Gerriets Austria CEE GmbH  
Gorskistraße 8  
AT-1230 Wien  
☎ +43 1 6000 600 0  
☎ +43 1 6032 585  
info@gerriets.at  
www.gerriets.at

Gerriets España S. L.  
Pol. Ind. Camporosso Sur  
Avda. de Las Moreras  
Sector 1, Naves 1-2-3  
ES-28350 Ciempozuelos, Madrid  
☎ +34 91 134 5022  
☎ +34 91 134 5084  
info@gerriets.es  
www.gerriets.es

Gerriets Belgique  
Distribué par :  
Gerriets S. A. R. L.  
Rue du Pourquoi Pas  
FR-68600 Volgelsheim  
☎ +33 3 89 22 70 22  
☎ +33 3 89 22 70 50  
info@gerriets.fr  
www.gerriets.fr

Gerriets Nederland  
LevTec BV  
Pieter Braaijweg 51  
NL-1114 AJ Amsterdam-Duivendrecht  
☎ +31 20 40 82 553  
☎ +31 20 40 82 662  
info@gerriets.nl  
www.gerriets.nl

Gerriets Italia  
Risam for show  
Viale Spagna 150 / B  
IT-20093 Cologno Monzese (MI)  
☎ +39 02 2532 113  
☎ +39 02 2532 130  
info@gerriets.it  
www.gerriets.it

Gerriets Hellas  
Stage Art EPE  
Stournari 27B  
GR-10682 Athens  
☎ +30 210 3836 715  
☎ +30 210 3811 929  
info@gerriets.gr  
www.gerriets.gr

Gerriets Turkey  
Benart Sound-Light-Vision-Stage System  
Ibrahim Karaoglanoglu Cad.  
Altinok Plaza No:37 K:3  
Seyrantepe – Kağıthane  
TR-34418 Istanbul  
☎ +90 212 254 33 43  
☎ +90 212 254 33 53  
benart@benart.net  
www.benart.net

Gerriets Slovenija  
(Croatia, Bosnia and Herzegovina,  
Serbia, Montenegro, Macedonia,  
Kosovo)  
MAORI, d.o.o.  
Špruha 14  
SI-1236 loc Trzin  
☎ +386 143 052 79  
☎ +386 590 27 508  
info@gerriets.si  
www.gerriets.si

Gerriets Hungária  
Gépbér Hungária Ltd  
Mester u. 87  
HU-1095 Budapest  
☎ +36 147 665 21  
☎ +36 147 665 20  
info@gerriets.hu  
www.gerriets.hu

Gerriets Romania  
Distributed by:  
Gerriets Austria CEE GmbH  
Gorskistraße 8  
AT-1230 Wien  
☎ +43 1 6000 600 0  
☎ +43 1 6032 585  
info@gerriets.at  
www.gerriets.at

Gerriets Bulgaria  
Landau Impex GmbH  
Shavarski pat Str. No. 3  
BG-1000 Sofia, Losenetz  
☎ +35 92 862 92 44  
☎ +35 92 868 71 16  
info@gerriets.bg  
www.gerriets.bg

Gerriets Korea Co., Ltd.  
22-12, Ogab-gil 192beon-gil,  
Gamgok-myeon, Eumseong-gun,  
Chungcheongbuk-do  
Korea 369-852  
☎ +82 2 477 7713  
☎ +82 2 477 1490  
info@gerriets.co.kr  
www.gerriets.co.kr

Gerriets South Africa  
AVL Distribution  
P.O.Box 70740  
4, Ealing Crescent  
ZA-2021 Bryanston  
☎ +27 11 463 5804  
☎ +27 11 463 5809  
info@gerriets.co.za  
www.gerriets.co.za

Gerriets Brasil  
Av. do Contorno, 6.413, 2º andar  
Savassi  
cep 30110-017 Belo Horizonte MG  
Brasil  
☎ +55 31 9201 4700  
info@gerriets.com.br  
www.gerriets.com.br

Gerriets Czech Republic / Slovakia  
firmy GERRIETS pro CR a SR  
Boretická 4  
CZ-62800 BRNO  
☎ +420 731 064 022  
info@gerriets.cz  
www.gerriets.cz

